

ZuG OPD S 120 | 28W

Product Reference

Environment Indoor

Installation Ceiling Surface

Construction & Materials

Housing Extruded Aluminium

Primary Lens -

Primary Reflector Aluminium White Painted

Secondary Reflector -

Body Finish White,Black

Diffuser Premium high-transmission opal

Antiglare Baffle Black,White,Custom

Thermal Management

Heat Sink Material Aluminium

Cooling Technique Passive Cooling

Optical System

Beam Direction General Diffuse

Tilt No

Swivel No

Electrical System

Driven with Constant Current Driver

Input Voltage/Hz 220V- 240V/50-60Hz

Control Gear Included

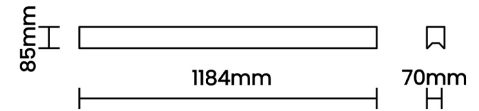
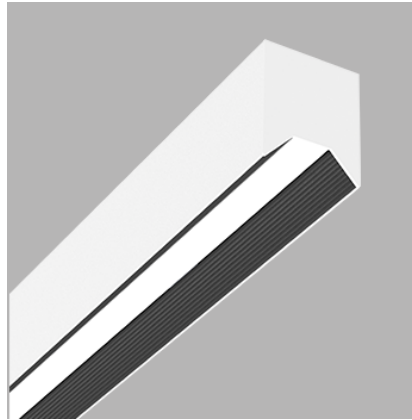
Mounting Integral

LED Power Watts 23.7W

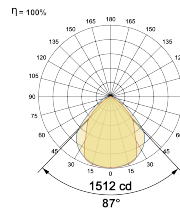
System Power Watts 27.2W

Operating Voltage V_{in} 220-240 Vac

Power Factor p.f. > 0.95



Light Distribution



LED Technology

Binning 3 Step MacAdam

LED Life Time @ L80/B10 >50000 hours

Colour Rendering (CRI) CRI80,CRI90

Led Type SMD mid power

LED Fitted Osram/Samsung Mid Power LED array 33V-36Vdc/700mA

Controls

Standard Switchable On/Off

Optional PDIM,DDIM,BTTM,CASAMBI,Non Dimmable

Ordering Details

| Code Example: | Name | Watt | CCT | CRI | Angle | Finish | Control |
|---------------|---------------|------|-------|-------|-------|--------|---------|
| | ZuG OPD S 120 | 28W | WW27K | CRI80 | 105° | SWH | On/Off |

Select one from each column with highlighted values to create the ordering code

| NAME | WATT | LUMEN | EFFICACY | CCT | CRI | ANGLE | FINISH | CONTROL | |
|---------------|------|-------|----------|-------|-------------|-------|--------|-----------|-------------------------|
| ZuG OPD S 120 | 28W | 2149 | 79 | 2700K | WW27K | CRI80 | 105° | White SWH | Non Dimmable On/Off |
| | | 2203 | 81 | 3000K | WW30K | CRI90 | | Black SBL | Phase Dimmable PDIM |
| | | 2312 | 85 | 4000K | NW40K | | | | Dali Dimmable DDIM |
| | | 2366 | 87 | 5700K | CW57K | | | | Bluetooth Dimmable BTTM |
| | | | | | 2700K-5700K | TW | | | |
| ZuG OPD S 120 | 28W | | | WW27K | CRI80 | 105° | SWH | On/Off | |

